

Smuttynose Brewing Company

New Hampshire, USA

Commissioned in 2019

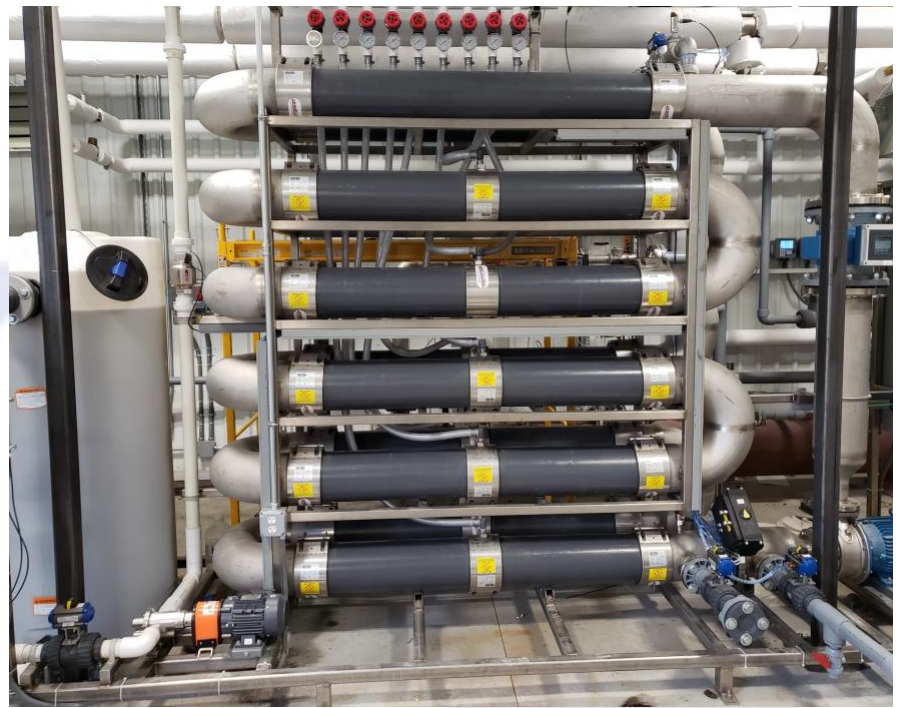
Digestate Filtration

33,000 GPD

Influent: 10,000-20,000 ppm TSS

Concentrate up to 40,000 ppm

12 V8 PermaFlux™ Modules



Challenge:

Beer brewing is a process that is very water intensive: 5-10 L of water is required to produce 1L of beer. Various organic components used throughout the brewing process result in wastewater with high organic loading.

The brewery uses Anaerobic Digestion to treat its wastewater. However, the digester contents need to be filtered to remove suspended solids and bring the water quality within discharge limits.

PermaFlux™ UF Membrane Solution:

After a successful 1.5-month long pilot study at a nearby brewery where a PermaFlux™ UF system competed against alternative membrane solutions and water treatment technologies, Thetis was awarded the contract.

The system contains 12 PermaFlux™ V8 modules, a feed pump, recirculation pump, backwash pump, feed holding tank, and automation. The system draws feed directly from the digester (influent TSS concentration 1-2%). PermaFlux™ extracts clean permeate that is sent to drain, and then supplies concentrated digestate (up to 4% TSS) to the anti-foaming nozzles back inside the digester.

Contact Thetis Today!

Jeffrey Parr - VP of Sales and Marketing

jeff.parr@thetisenvironmental.com

56 Ditton Drive, Hamilton ON L8W 0A9

